

QUALITY BY CONVICTION

BS Series

MODEL **BS551-10** / **BS551-20**

Forced Air Convection Reflow Oven



This is Autotronic

Quality by conviction. It is our motto - but you can profit by it world-wide. To be on the winning team you rely on a partner who combines quality, flexibility and innovation.

Autotronic is a global company with approximately 200 employees. We are your specialist for SMT stencil printers, pick and place machines and reflow ovens of low-to medium-Series and complete SMT production lines. Our global commitment allows us to bring together the best components of all continents into outstanding products.

www.autotronic.de



AUTOTRONIK
Fertigungssysteme für die Elektronikindustrie

TECHNICAL DESCRIPTION

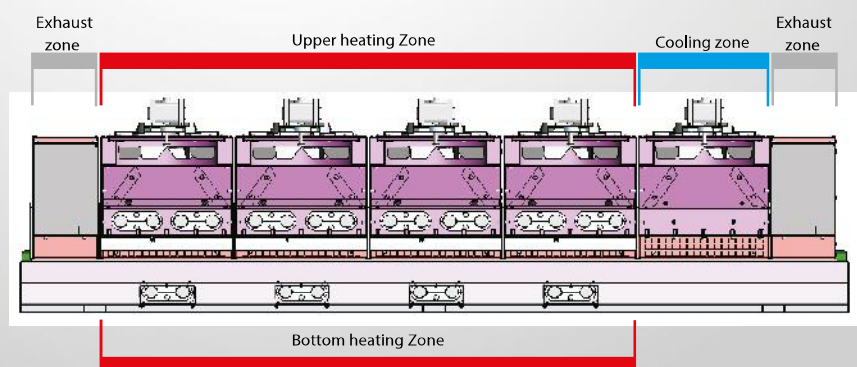
Technical description

The soldering system BS551-10 is equipped with modern requirements regarding usability, low power consumption and interfaces for the communication with other devices.

The basic system is designed as a desk top model and is equipped with eight heating zones, 4 upper and 4 bottom zones. The heating zones emit convection heat with the help of hot air fans. The upper part of the heating chamber contains additionally a cooling zone and an exhaust hood at the inlet area as well as at the outlet area.

The transport of the PCBs follows via a mesh belt. The operation of the soldering system is done with the help of a modern 7" touch panel. A 1-channel temperature profiler is integrated to check the soldering profile. The necessary thermocouple is included in the delivery

Functional scheme BS551-10



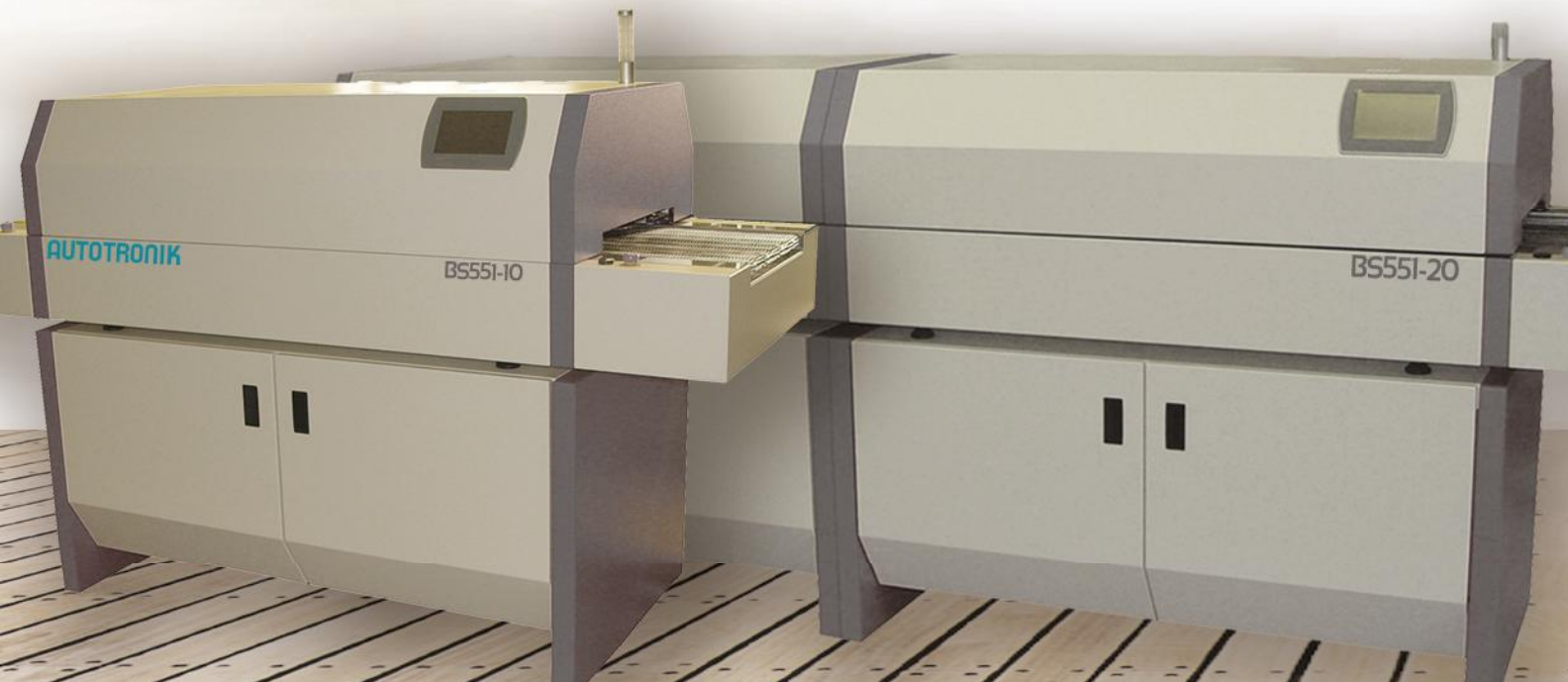
Individual personalization

The basic system can be upgraded with several options and thereby adapted to your personal requirements.

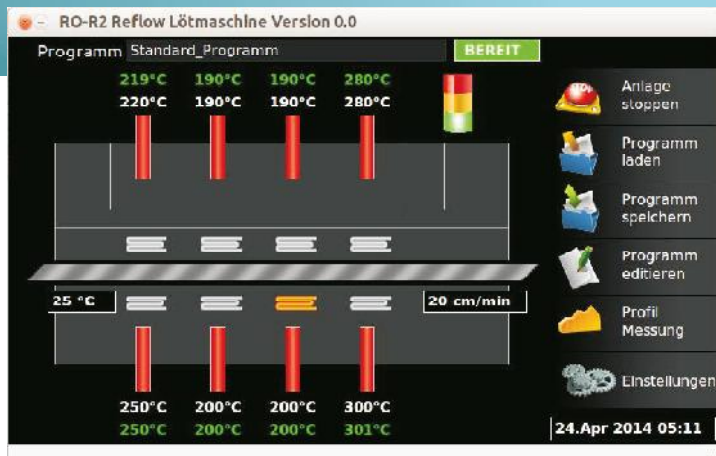
- **Cabinet**, height adjustable. Storage compartment can be closed with two doors
- **Lamp** (green, yellow, red) to show the status of the system
- **Pin chain conveyor** (optional)
- **Power Save package** with
 - **Single board recognition** and
 - **Power Down Mode** The system changes to standby mode with reduced heating power. When recognizing a board at the inlet, the conveyor stops, the oven is heating up to soldering temperature and then starts the conveyor again.
- **Communication package** consisting of SMEMA interface, PC interface, WLAN interface (optional)
- **Exhaust box** in case you don't have an in-house exhaustion system (optional)

AUTOTRONIK

Fertigungssysteme für die Elektronikindustrie



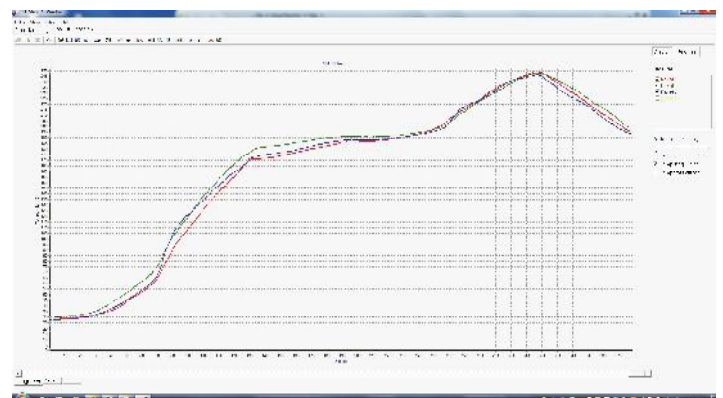
User interface, menu samples



Technical data BS551-10

Length	2010 mm
Width	790 mm
Height	550 mm
-- inkl. Lamp	710 mm
Weight	190 kg
Useable working width	405 mm
Active heating chamber length	850 mm
Inlet height	45 mm
Zones	4 Upper heating zones 4 Bottom heating zones additional 1 cooling zone 2 Exhaust zones
Conveyor speed	15 cm/min - 90 cm/min
-- typical	20 cm/min
Heating power	Max. 12 kW
Connection values	3x 230/400 VAC/N/PE 50 Hz with 16A CEE Stecker
Operation	7" Touchpanel

Typical soldering profile BS551-10



Additional Information

Also available as 20 Zone Oven. (BS551-20)



AUTOTRONIK

Fertigungssysteme für die Elektronikindustrie



Worldwide at your side.

We have service partners all over the world.



Unbeatable Service

In case of problems we are disposal almost around the clock.



Everything from one source

We are your partner for all process steps.



Innovative Features

Our machines are using technical standards, which are normally used in bigger machines for mass production.



Quality and Innovation at a fair price

Through global positions.



A expert in small and medium-scale production.

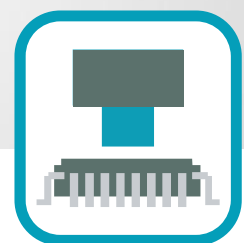
AUTOTRONIK-SMT GmbH

Sulzbacher Str. 111
92224 Amberg
Deutschland

Tel +49 (0) 96 21 -600 691
Fax +49 (0) 96 21 -600 692
E-mail office@autotronic-smt.com
Web www.autotronic.de



www.autotronic.de



AUTOTRONIK

Fertigungssysteme für die Elektronikindustrie